

TALE TOWN'S DETECTIVE AGENCY HEADQUARTERS

Little Red enters your office . . .

Stell 6th Grade ELA
Packet Days 27-31

Little Red



"Detective, I need your help! Last night someone broke into Tale Town's Tower Clock and stole both the short and long hands off the clock's face. I'm not sure if you knew this, but those hands have the power to mess with the time all over town. The thief already has started messing with the time, look at your watch Detective!



Looking down at your watch, you realize that Little Red is right! The time is saying 12:00, but you just ate breakfast!

Little Red

"It's so annoying! I missed two appointments this morning because of the time on my watch flicking back and forth like a yo-yo. If you look outside, you'll see that the town is starting to become frustrated and anxious too. Detective, could you please help solve who stole Tale Town's Clock Hands?"



You grab your detective kit and agree to help solve this case.



"Thank you, Detective! I'll meet you at the bottom of Tale Town's Tower Clock in ten minutes. Probably don't look at your clock for the time."

On the following pages you will be visiting locations and discovering clues. As you complete each page, go over your possible suspects list to see if any information discovered eliminates a character from being the clock tower thief.

POSSIBLE SUSPECTS

Suspect	Appearance	Character Traits	Has the ability to Fly? Yes/No	Clothing Colors	Motive
Little Red	- Brown Hair - Blue Eyes - Short - Medium Sized	- Curious - Friendly - Anxious - Adventurous	NO	- Red - Blue - White	Wants a second chance
Zelda the Witch of the West	- Red Hair - Green Eyes - Tall - Medium Sized	- Lonely - Unfriendly - Sly - Cruel	YES	- Black - Green - Red	Wants to cause chaos in Tale Town
Nivens McTwisp the White Rabbit	- White Fur - Blue Eyes - Short - Small Sized	- Anxious - Energetic - Rude - Impatient	NO	- Orange - Red - Gray	Never wants to be late again
Bert the Big Bad Wolf	- Black fur - Brown Eyes - Tall - Large Sized	- Cruel - Sly - Strong - Energetic	NO	- Red - Green - Black	Wants revenge
Rumpelstiltskin	- Blonde Hair - Brown Eyes - Tall - Medium Sized	- Cheerful - Sly - Funny - Selfish	NO	- Brown - Red - Orange	Wants revenge
Pinocchio	- Black Hair - Blue Eyes - Short - Small Sized	- Friendly - Dishonest - Foolish - Selfish	NO	- Orange - Blue - Red	Wants a second chance
Granny Smith	- White hair - Blue Eyes - Short - Medium Sized	- Courageous - Generous - Calm - Caring	NO	- Green - Blue - White	Wants to be young again
Polly Piggles	- Blonde Hair - Brown Eyes - Short - Medium Sized	- Foolish - Caring - Greedy - Cheerful	NO	- Red - Blue - Black	Wants revenge
Peter Pan	- Red Hair - Brown Eyes - Tall - Medium Sized	- Adventurous - Foolish - Sly - Cheerful	YES	- Green - Red - Brown	Wants to be young again
The Mad Hatter	- Red Hair - Green Eyes - Short - Medium Sized	- Foolish - Friendly - Anxious - Generous	NO	- Green - Brown - Red	Wants a second chance

Solve the clues and then cross the suspects off the list until only one place remains! The last suspect remaining is the clock thief!

2. VISIT LOCATION: Little Red's Cottage

Greeted by Little Red's grandma, you're pleased to be served some delicious lemonade and strange biscuits.



Granny Smith



"This time mess is making baking very difficult. Even when I set my timer on, it pauses and rewinds back and forth like crazy! So, please forgive me if the biscuits are not the best tasting today."

Little Red



"Granny, did you see anyone around our cottage yesterday? I think someone stole the clock tower key and then must've put it back before the morning!"

Granny Smith



"I heard some rustling around the garden late last night. It wasn't windy, so I went to take a look to see if that cheeky rabbit was back stealing my berries. All I found was a broken thorny branch fallen from my rose bush. A button was caught on one of the thorns."

Little Red



"OH! The button is probably off the thief's clothing! "

CLUE 2: Fill in the missing letters to complete the CAUSE and EFFECT statements below. Then match the letters with the numbers into the empty boxes to reveal a clue!

Use the reading text above to answer the questions below. Highlight where you find the answers in the text above as evidence.

CAUSE: Gra₁ny's tim₂er keeps flicking b₃ck and f₄rth.

EFFECT: So, Granny is finding it ₅ifficult to ₆ake.

CAUSE: Granny ₇heard some ₈ustling aro₉nd the gar₁₀en la₁₁te last ₁₂ight.

EFFECT: She went to check if that cheek₁₃ ₁₄abby₁₅ was back stealing berries.

CAUSE: The thie₁₆ ₁₇scaped bef₁₈re Granny got to the gard₁₉n.

EFFECT: All Granny fo₂₀nd was a broke₂₁ thorny branch with a bu₂₂ton.

CAUSE: The th₂₃ef's clo₂₄hing got caught on a thorny r₂₅ose bush branch.

EFFECT: A button was left behin₂₆ on one of the t₂₇orns.

--	--	--

13 18 9

--	--	--	--

16 23 12 5

--	--	--

8 19 26

--	--	--	--	--	--

22 27 14 2 3 10

--	--

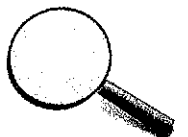
25 1

--	--	--

15 7 17

--	--	--	--	--	--

6 20 11 24 4 21



3. VISIT LOCATION: Down Muffin Lane

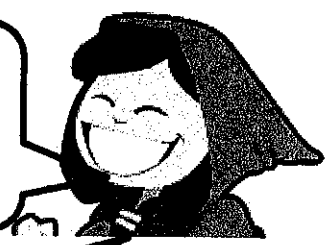
You and Little Red are walking down Muffin Lane. You notice a crowd of angry citizens.

Nivens McTwisp



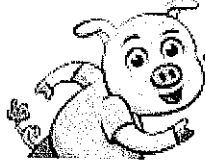
"It's all your fault! You are the one with the key to the tower; and the only one with access! I've been late for three very important dates! "

Little Red



"No! It wasn't me! Someone stole my clock tower key and returned it!"

Polly Piggles



"Why would someone steal your key and then go to the effort of returning it?"

"The thief must be trying to make it look like it was me!"

Sheriff Star



"Little Red, you are under arrest for the theft of Tale Town's Clock Tower Hands and for messing with the time. You will remain behind bars until you confess to the crime or proven innocent!"

As Sheriff Star gives the order, Little Red is handcuffed and taken to a cell in Tale Town's dungeon. Little Red looks at you helplessly as she pleads her innocence.

CLUE 3 - Fill in the missing letters to complete the answers in the comprehension questions below. Then match the letters with the numbers into the empty boxes to reveal a clue!

Use the reading text above to answer the questions below. Highlight where you find the answers in the text above as evidence.

- Why is Nivens McTwisp angry with Little Red? **Because he blames Little Red for being la__e to t__ree very important da__es.**
1 2 3
- Why doesn't Polly Piggles believe Little Red? **Because Polly doesn't understand w__y the thief would go to the __f__ort of returning the key.**
5 6
- What does Little Red think the thief is doing? **The thief is tr__ing to make it look like it was h__r who __tole the clock tower hands.**
8 9
- How long will Little Red remain behind bars? **Unti__ she confe__ses to the cr__me or is proven__nnocent.**
10 11 12 13

3	2	5

1	4	12	8	6

13	9

11	10	7

4. VISIT LOCATION: Detective Headquarters

You return to your office to think about what could have happened. You still don't have enough evidence to solve this case.

Strangely, a note has been left right next to your computer. You stop to read it to see if you can find any evidence in the text:

Dear Detective,

I went for a walk late last night. It was 11:00 p.m., when I walked past Tale Town's Clock Tower. I noticed someone taking off the clock hands, so I hid behind a nearby tree to watch what was going on. Unfortunately, it was too dark for me to identify the thief. They disappeared for a moment, but then I saw the thief opening the bottom door and throwing something small inside; it looked like a tool. Afterwards, the thief continued to walk over to Little Red's house. Unfortunately, I didn't get a chance to see anything else. Out of fear for being out past midnight, I ran back home.

From,
Cinderella

CLUE 4 - Fill in the missing letters to complete the answers in the questions below. Then match the letters with the numbers into the empty boxes to reveal a clue!

Use the reading text above to answer the questions below. Highlight where you find the answers in the text above as evidence.

- WHO** wrote the letter? C _nd_ rell_
 1 2 3
- WHEN** did Cinderella see the thief removing the clock hands? La _e last nigh_ at
 4 5
 lev n O'clock _ .m.
 6 7 8
- WHERE** did Cinderella hide? She _id be _ind a nea_ b_ tr_ e.
 9 10 11 12 13
- WHAT** did the thief throw inside the door? Some _hing _mall that looked like a _o_ l.
 14 15 16 17
- WHERE** did the thief go after leaving the clock tower? To _ittle Red's _use.
 18 19 20
- WHY** was the thief unable to be identified? Because it _as too dark.
 21
- WHY** did Cinderella run back home? Out of _ear _or being out past midnig_ t.
 22 23 24

4	10	6

16	9	1	13	22

19	3	15

14	24	2

8	17	21	7	11

5	20

23	18	12

5. VISIT LOCATION: The Three Little Pigs Café

You head over to The Three Little Pigs Café to buy some food.

Little Miss Muffet



"With time all over the place I feel like as if I am going crazy! No wonder why there is so much chaos in town. I don't understand why anyone would bother to play with time like this, all it does is drive everyone crazy."

Georgie Porgie



"It's so strange! I looked so much older an hour ago, now I look years younger. This is all so confusing!"

Little Miss Muffet



"I don't even know if it's breakfast, lunch or supper. I guess I'll be eating curds and whey all day!"

"Looks like the time issue isn't bothering your spider friend! Anyway, I don't care what time of the day it is, I'm going to eat plum pie all the time now!"

CLUE 5 - Below is a set of clue riddles or definitions to words written in the reading section above. The blank lines represent missing letters in the word. As you fill in a letter on each blank line, match that letter with the number underneath into the empty boxes to reveal a clue! The first one is already done.

→ **Highlight the word answers in the text above as evidence.**

A baked dish of fruit, or meat/vegetables, with a top and base of pastry.	p <u> </u> <u> </u> <u> </u>
Unusual or surprising; difficult to understand or explain.	s <u> </u> <u> </u> r a n g <u> </u> <u> </u>
A type of stone fruit.	p <u> </u> <u> </u> <u> </u> m
A meal eaten in the morning.	<u> </u> r e <u> </u> k f a s <u> </u>
A creature with eight legs.	<u> </u> <u> </u> i d e <u> </u>
Something that Miss Muffet is eating.	<u> </u> <u> </u> r d s and <u> </u> h e <u> </u>
It has sixty minutes.	<u> </u> <u> </u> u r
A built up area with a name.	<u> </u> <u> </u> w <u> </u>
Something that Miss Muffet is doing at the café.	e a <u> </u> i <u> </u> <u> </u>

--	--	--

3 17 4

						I	
--	--	--	--	--	--	---	--

13 14 5 11 12 1 22

--	--	--	--	--

15 8 23 19 10

--	--

9 18

--	--

7 2

--	--	--	--	--

16 20 6 21 24

SOLVE THE MYSTERY!

ONCE UPON A CRIME: STOLEN TIME

WHO stole the magical clock hands and is messing with the time?

In the space below, write a list of the clues that you discovered during your investigation. Include a brief outline explaining how each clue helped you decide which suspects to eliminate from your list.

- _____

- _____

- _____

- _____

- _____

 **Well done!**

Upon your brilliant discovery, Tale Town's Clock Tower Hands are immediately returned and the time is restored once again. Everyone in Tale Town cheers for your hard work on this case, great job Detective!

 **Oops! Try again!**

No, that is not who stole the clock hands, go back, check your work and try again.